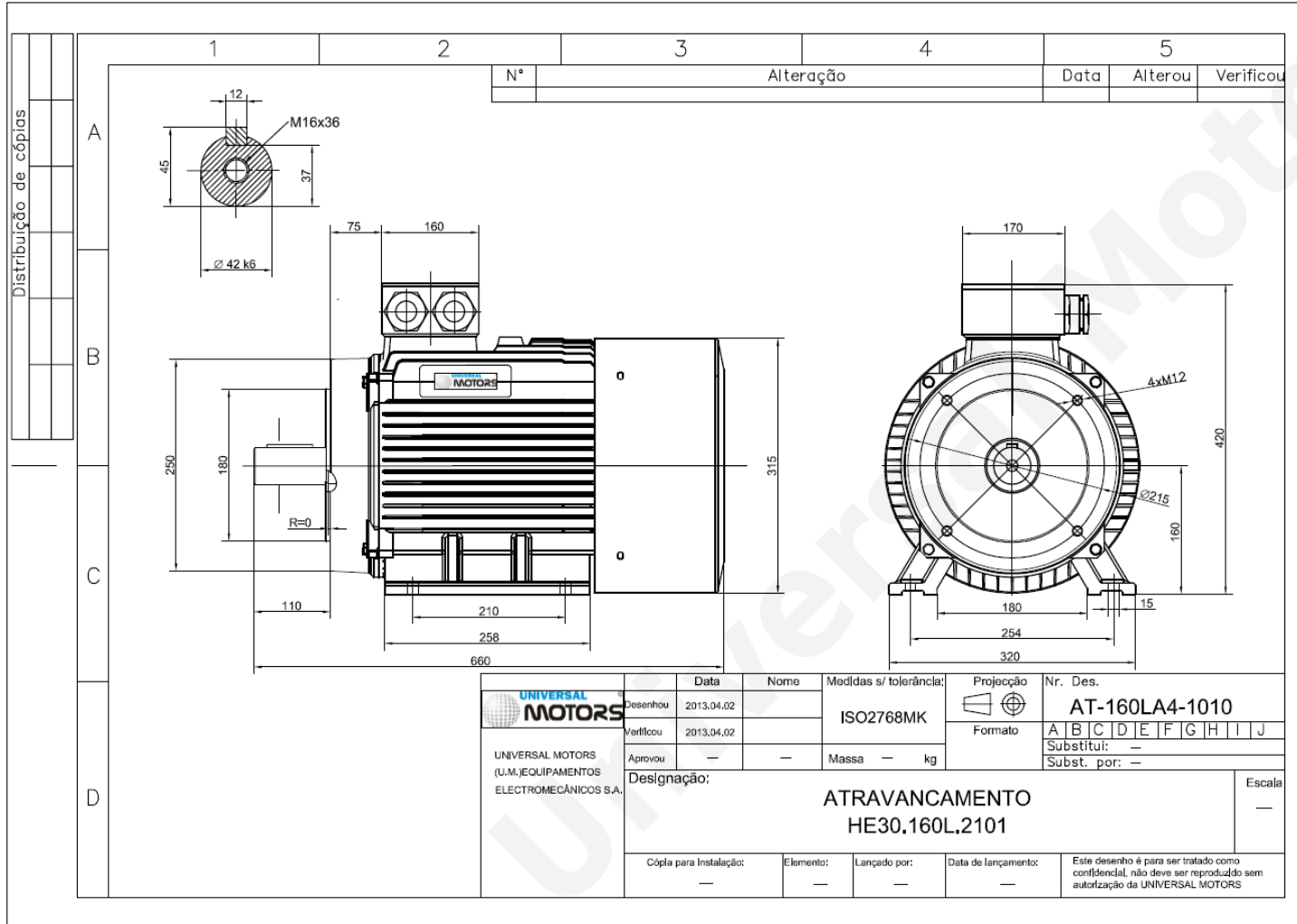


# TECHNICAL DATA

Three Phase Electric Motors - Cast Iron Frame  
 HE30 160 L1 6 IE2  
 11 kW / 15 Cv  
 970 RPM



Motor type: **HE30 160 L1 6 IE2**  
 Output: **11 kW / 15 Cv**  
 Speed (min<sup>-1</sup>): **970 RPM**  
 Frequency: **50 Hz**  
 Voltage: **400 V**  
 Current: **22.7 A**  
 Power factor (Cos Ø): **0.79**  
 Poles: **6**  
 Insulation class: **F**  
 Temperature rise Class: **B**  
 Efficiency 50%: **88.2 %**  
 Efficiency 75%: **89.1 %**  
 Efficiency 100%: **88.7 %**  
 Torque: **108 N.m**  
 Tstarting/Tnominal: **2.1**  
 Istarting/Inominal: **6.9**  
 Tmaximum/Tnominal: **2.1**  
 Noise: **62 Db(A)**  
 Weight: **148 Kg**  
 Bearing DE: **6309 C3**  
 Bearing NDE: **6309 C3**

Regime - S1

Altitude - 1000m

Environment Temperature - 40°C

## CONTACTS:

UNIVERSAL MOTORS Tel: +351 252 299 080  
 Rua de São Brás,745 Fax: +351 252 299 089  
 4480-782 VILA DO CONDE Mail: [geral@universalmotors.pt](mailto:geral@universalmotors.pt)

\* References applied only in the UK